



Shell Dredging Permit Summary

- Man O War Shoals -

OAC
December 12, 2016



Permit Review

APPLICANT

Request

DNR



REVIEW AGENCIES

Decision

Corps of Engineers
NMFS
EPA
FWS
MDE



Recent Timeline

AUG 2016

- DNR responded to 41 questions and issues from the review agencies
7 from USACE, 25 from NMFS, 9 from EPA
- DNR responded to each issue/question
- Additional information and/or clarification was deemed necessary

NOV 2016

- A meeting was convened NOV 22 by the Corps, to discuss outstanding issues
- DNR/Corps/NMFS/FWS/EPA/MDE



NOV 22 Meeting

NOV 22, 2016

- DNR/Corps/NMFS/FWS/EPA/MDE
- Discussion focused on information needed to complete the EFH and ESA assessments
 - Essential Fish Habitat assess.
 - Endangered Species Act assess.
- Discussed a Time-of-Year restriction. (No dredging Feb 15 to June 15)
- Discussed clarifications needed for the map and some text in Attachment 1
- Corps to send a letter listing what is still needed (rec'd Dec 9)



DEC 9 LETTER

DEC 9, 2016

ISSUES from the NOV 22 MTG SENT in WRITING

....highlights are:

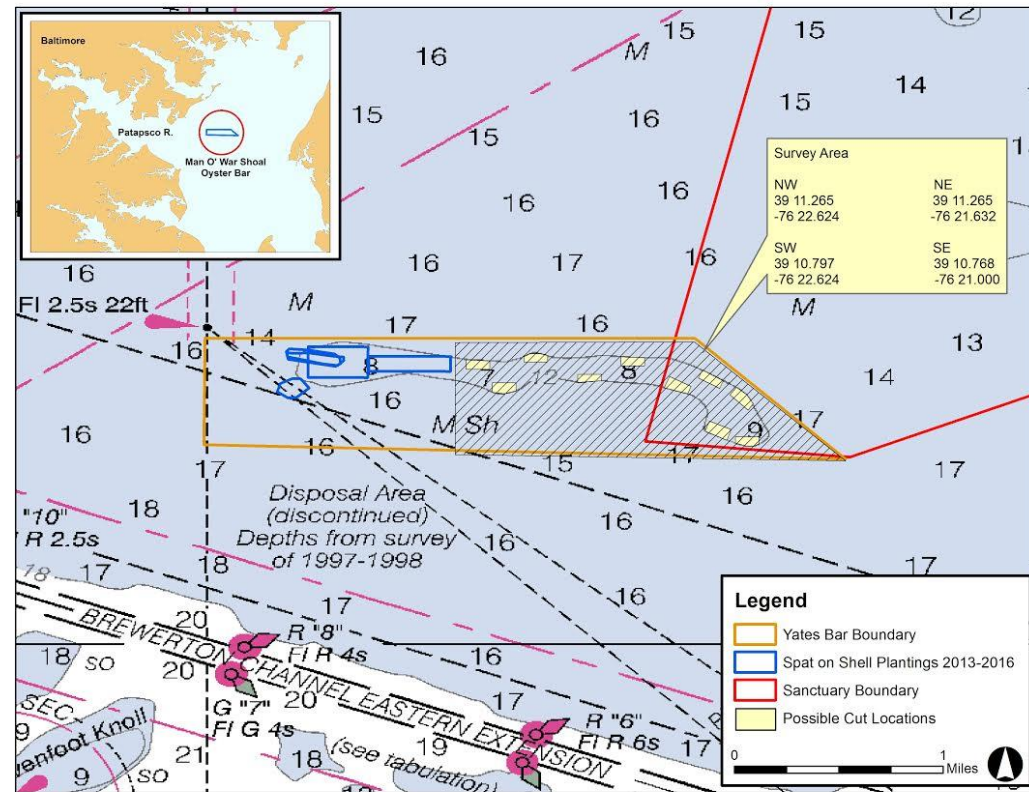
- Revise the MOW Shoal map and Attachment 1 text to clarify certain aspects.
- Conduct a new patent tong survey to provide recent oyster population data so the agencies can review impacts with up-to-date oyster data.
- Describe how the dredge cut locations are to be determined and how impacts to species will be minimized by the selection process.
- Address concerns related to sturgeon and sea turtles (silt, vessel movements and oil spills, underwater noise). Describe measures to avoid entrainment of these species.
- Dredging may have to be shut down if certain parameters are exceeded (ex, silt loads).

NEXT STEPS

- DNR will reply
- Deadline is April 1, 2017 but we will complete it much sooner

Revised Map:

- The revised proposed area is shown by hatched lines
 - Removed the western side
 - Provided space between the seed plantings (in blue) and a dredge cut
 - Provided lat/long coord of the hatched area (the proposed area)
- Note: An oyster population survey is planned for December for the shallow portion of the hatched area, to provide needed oyster data to the Corps



This slide was updated after the OAC meeting of 12/12/16